

For Research Use Only. Not For Use In Diagnostic Procedures

Version 2.0

Citrate Synthase Polyclonal Antibody

Rabbit Polyclonal

Do not eat

Store at -20° C



Cat.No. MAP2576

Size : 50ul 100ul 150ul (350 µg/ml)

Technical literature is available at: www.mesgenbio.com.

E-mail MesGen Technical Services if you have questions on use of this system: tech@mesgenbio.com

Background

Citrate synthase (CS), the first and rate-limiting enzyme of the tricarboxylic acid cycle, plays a key role in regulating energy generation of mitochondrial respiration (PMID:19479947). It belongs to the citrate synthase family. The deduced 466-amino acid protein contains an N-terminal mitochondrial targeting sequence and a motif highly conserved in citrate synthases (PMID:12549038). It can exist as a dimer (PMID:8749851). Northern blot analysis detected no CS expression in thymus and small intestine (PMID:12549038). This antibody is specific to CS.

Immunogen

Citrate synthase fusion protein Ag9117

Source

Rabbit

Isotype

IgG

Purification method

Antigen affinity purification

Species Specificity

human, mouse, rat

Calculated molecular weight

466 aa, 52 kDa

Observed molecular weight

45-50 kDa

Uniprot

O75390

Tested Applications

IF, IHC, IP, WB, ELISA

Recommended dilution

WB : 1:1000-1:8000

IHC : 1:100-1:400

IP : 0.5-4.0 µg for IP and 1:500-1:2000 for WB

IF : 1:50-1:500

Storage condition

PBS with 0.02% sodium azide and 50% glycerol pH 7.3.

Store at -20°C. Stable for one year after shipment. Aliquoting is unnecessary for -20°C storage.

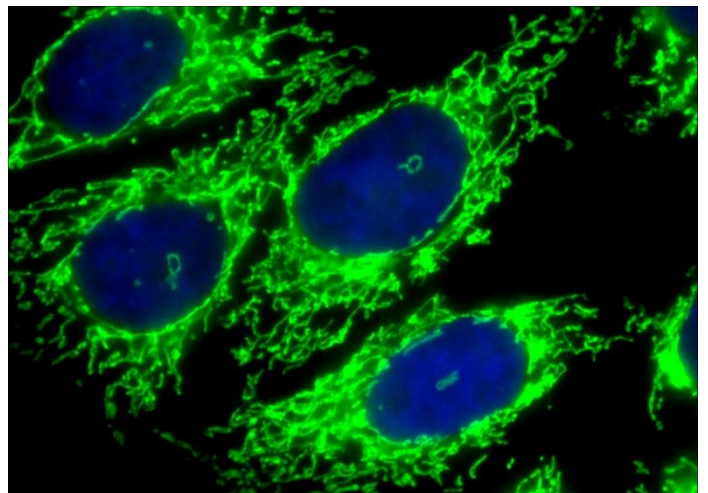


Figure.1 Immunofluorescence analysis of HepG2 cells labeling Citrate synthetase (green) with MAP2576 a dilution of 1/50 and Alexa Fluor 488 Goat Anti-Rabbit IgG(H+L). Cells were fixed in 10% formaldehyde at room temperature for 15 minutes.

For Research Use Only. Not For Use In Diagnostic Procedures.