

For Research Use Only. Not For Use In Diagnostic Procedures

Version 2.0

**重组小鼠巨噬细胞集落刺激因子****Recombinant Mouse M-CSF**

Do not eat



Cat.No. MGS1253

Lot.No : Refer to Vial

Product Size : 10ug 50ug 500ug Technical literature is available at: [www.mesgenbio.com](http://www.mesgenbio.com).E-mail MesGen Technical Services if you have questions on use of this system: [tech@mesgenbio.com](mailto:tech@mesgenbio.com)

Accession #: P07141

**Known as**

Macrophage colony-stimulating factor 1; CSF-1; MCSF; Csf1;

Csfm

**Mol Mass**

26kDa

**AP Mol Mass**

37-80kDa, reducing conditions.

**Description**

Recombinant Mouse Macrophage Colony-Stimulating Factor 1 is produced by our Mammalian expressionsystem and the target gene encoding Lys33-Glu262 is expressed.

**Background**

Macrophage colony-stimulating factor1, M-csf, is a single-pass type I membrane protein. It is a hematopoietic growth factor that is involved in the proliferation, differentiation and survival of monocytes, macrophages and bone marrow progenitor cells. M-CSF affects macrophages and monocytes in several ways including stimulating increased phagocytic and chemotactic activity and increased tumour cell cytotoxicity. The role of M-CSF is not only restricted to the monocyte / macrophage celllineage. By interacting with its membrane receptor, M-CSF also modulates the proliferation of earlier hematopoietic progenitors and influence numerous physiological processes involved in immunology, metabolism, fertility and pregnancy.

**Formulation**

Lyophilized from a 0.2 µm filtered solution of PBS, pH 7.4.

**Quality control**

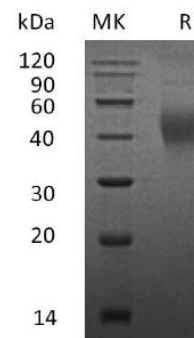
Greater than 95% as determined by reducing SDS-PAGE.

**Endotoxin**

Less than 0.001 ng/µg (0.01 EU/µg) as determined by LAL test.

**Bioactivity**

Measured in a cell proliferation assay using M-NFS-60 mouse myelogenous leukemialymphoblast cells. The ED50 for this effect is 0.04-0.2 ng/ml.



SDS-PAGE

**Reconstitution**

Always centrifuge tubes before opening. Do not mix by vortex or pipetting. It is not recommended to reconstitute to a concentration less than 100 µg/ml. Dissolve the lyophilized protein in distilled water. Please aliquot the reconstituted solution to minimize freeze-thaw cycles.

**Storage condition**

Lyophilized protein should be stored at < -20°C, though stable at room temperature for 3 weeks. Reconstituted protein solution can be stored at 4-7°C for 2-7 days. Aliquots of reconstituted samples are stable at < -20°C for 3 months.

**产品仅供科学研究 禁止用于临床诊断****For Research Use Only.****Not For Use In Diagnostic Procedures.**